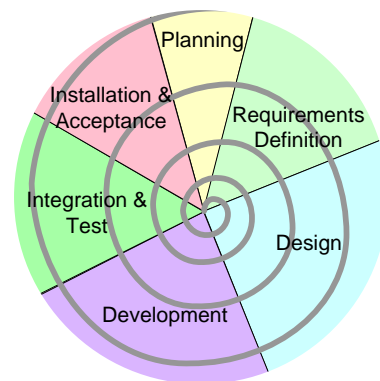


Logical Database Description

BOTS Customer Component

Prepared For: Highland Office Supply
Prepared By: John Zoltai
Digital Publications LLC

Document ID: BOTS-CUST-LDD
Version: 1.0



Copyright © 2005 Digital Publications LLC

TABLE OF CONTENTS

INTRODUCTION	5
PURPOSE	5
SCOPE	5
LOGICAL ENTITY-RELATIONSHIP DIAGRAM	6
BOTS CUSTOMER COMPONENT	6
CUSTOMERS ENTITY	7
DEMOGRAPHICS ENTITY	8

GLOSSARY OF PROJECT-SPECIFIC TERMS	
Glossary of Software Engineering Terms	A standard Glossary of Software Engineering Terms is maintained online. Terms specific to this project are maintained below.
Glossary of Project-Specific Terms	A common Glossary of Project-Specific Terms is maintained on the project Web site.

INTRODUCTION

This is the Logical Database Description for the Customer (CUST) component of the Basic Order Tracking System (BOTS) software development effort.

PURPOSE

The purpose of a logical database description is to define the basic structure of the application at a conceptual level. The logical database description focuses on high-level data storage areas, known as entities, the actors that interact with these entities, the relationships between the entities, and quantitative metrics about each entity.

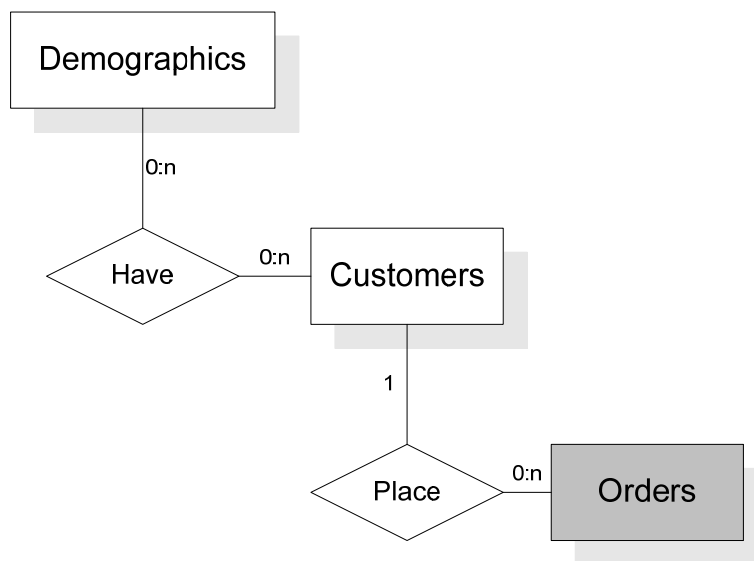
This document is referenced by the requirements document for this component. The logical database description is maintained separately because it forms the basis for the physical database description and data dictionary, to be developed during the design stage. These documents are best maintained in independent form, due to internal hyperlinks and the way in which these documents are utilized.

SCOPE

This document begins with a logical Entity-Relationship Diagram (ERD), followed by definitions of each entity shown on the ERD. Each entity definition contains a description of the entity, a description of its relationships with other entities, a description of the actors that interact with these entities and their roles, and quantitative metrics used to anticipate data loading issues.

LOGICAL ENTITY-RELATIONSHIP DIAGRAM

BOTS CUSTOMER COMPONENT



BOTS Customer Component Logical ERD

The Orders entity is managed via the separate Orders component and is shown here as a referenced entity that is not managed by this component.

CUSTOMERS ENTITY

DESCRIPTION

A customer is a person or business entity that purchased his office products from Highland. Information stored here will include Contact and Company Name, Addresses, Contact Numbers, Etc.

RELATIONSHIPS

Customers may place zero to many orders. Each customer may have zero to many demographics.

ACTOR INTERACTIONS

Role	Actors
Create	Salesperson, Database Administrator
Read	Everyone
Update	Salesperson, Database Administrator
Delete	Database Administrator

METRICS

Measure	Value
Day Zero Quantity	1,500
Additions Per Year	100
Losses Per Year	25
Simultaneous Users	5

DEMOGRAPHICS ENTITY

DESCRIPTION

Demographics are core categories of information about customers, such as Large Company, Medium Company, Small Company, Individual, Manufacturer Services, Government, etc.

RELATIONSHIPS

A demographic may be related with zero to many customers.

ACTOR INTERACTIONS

Role	Actors
Create	Database Administrator
Read	Everyone
Update	No one
Delete	Database Administrator

METRICS

Measure	Value
Day Zero Quantity	20
Additions Per Year	2
Losses Per Year	1
Simultaneous Users	5